



GLOBAL JOURNAL OF MANAGEMENT AND BUSINESS RESEARCH: A
ADMINISTRATION AND MANAGEMENT
Volume 16 Issue 11 Version 1.0 Year 2016
Type: Double Blind Peer Reviewed International Research Journal
Publisher: Global Journals Inc. (USA)
Online ISSN: 2249-4588 & Print ISSN: 0975-5853

Modeling and Scheduling of Multi-Stage and Multi-Processor Flow Shop

By Himangshu Kumar Paul, Ridwan Al Aziz, Touseef Mashrurul Karim
& Abdullahil Azeem

Bangladesh University of Engineering and Technology

Abstract- This paper addresses a multi-stage and multi-processor flow shop scheduling problem while minimizing the over utilization of machines. Fuzzy Inference System has been used to determine the job priority, considering factors such as completion times, processing complexity, critical ratio, profit over time, cost over time and level of inventory, while incorporating their uncertainties. In a similar manner, machine priority has been deduced, taking into account the mean time between failure, mean time to repair, mean time between shutdown, mean time between maintenance, failure rate and set up time. The grouping and sequencing of jobs in every stage are determined by an algorithm in such a way that the problem becomes multi-objective with objectives like minimizing the lead time, set up time, level of inventory, while maximizing machine and labor utilization along with profit over time.

Keywords: multi-processor flow shop scheduling, critical ratio, processing complexity, completion time, set up time, mean time between maintenance.

GJMBR-A Classification: JEL Code: L23



MODELINGANDSCHEDULINGOFMULTISTAGEANDMULTIPROCESSORFLOWSHOP

Strictly as per the compliance and regulations of:



Modeling and Scheduling of Multi-Stage and Multi-Processor Flow Shop

Himangshu Kumar Paul^α, Ridwan Al Aziz^σ, Touseef Mashrurul Karim^ρ & Abdullahil Azeem^ω

Abstract- This paper addresses a multi-stage and multi-processor flow shop scheduling problem while minimizing the over utilization of machines. Fuzzy Inference System has been used to determine the job priority, considering factors such as completion times, processing complexity, critical ratio, profit over time, cost over time and level of inventory, while incorporating their uncertainties. In a similar manner, machine priority has been deduced, taking into account the mean time between failure, mean time to repair, mean time between shutdown, mean time between maintenance, failure rate and set up time. The grouping and sequencing of jobs in every stage are determined by an algorithm in such a way that the problem becomes multi-objective with objectives like minimizing the lead time, set up time, level of inventory, while maximizing machine and labor utilization along with profit over time. A case study has also been presented to test the validity of the model.

Keywords: multi-processor flow shop scheduling, critical ratio, processing complexity, completion time, set up time, mean time between maintenance.

1. INTRODUCTION

Scheduling involves the timing and coordination of operations with the goal of obtaining a smooth rate of flow of goods or customers through the system, while attaining a high utilization of resources. Developing the production schedule in high-volume systems are often referred to as flow shop scheduling. In a multi-processor flow shop, there are multiple identical parallel machines in at least one of the multiple stages of operation. Some stages may have one machine, but at least one stage must have multiple machines. Each job is processed by one machine in each stage and it must go through one or more stages. Machines operating in parallel can be identical, uniform or unrelated.

Fuzzy set theory has been used to model this system. Recently, significant attention has been given to modeling scheduling problems within a fuzzy framework. This Fuzzy logic was introduced by Zadeh (1965). McCahone and Lee (1992) used fuzzy logic for job scheduling in flow shop. Chan et al. (1997) developed a fuzzy approach to operation selection. Tsujimura et al. (1993) showed that fuzzy set theory is useful in flow shop scheduling problems with uncertain

processing times. Grabot and Geneste (1994) proposed a way to use fuzzy logic in order to build aggregated rules, to allow obtaining a compromise between the satisfactions of several criteria. Ishibuchi et al. (1994) formulated a fuzzy flow shop scheduling problem where the due-date of each job is given as a fuzzy set and the objective function was to maximize the minimum grade of satisfaction over given jobs. Hong and Wang (2000) showed that flexible flow shops can be considered as generalizations of simple flow shops. Petroni and Rizzi (2002) presented a fuzzy logic based tool intended to rank flow shop dispatching rules under multiple performance criteria. Kacem et al. (2002) proposed a Pareto approach based on the hybridization of fuzzy logic (FL) and evolutionary algorithms (EAs) to solve the flexible job-shop scheduling problem (FJSP). Yun, Y. S. (2002) proposed a new genetic algorithm (GA) with fuzzy logic controller (FLC) for dealing with preemptive job-shop scheduling problems (p-JSP) and non-preemptive job-shop scheduling problems (np-JSP). Keung et al. (2003) used genetic algorithm to optimize the machine utilization and balance tool magazine capacity of a flexible machining workstation (FMW) in a tool-sharing environment where fuzzy logic technique could be incorporated to develop more realistic result. Paul & Azeem (2010) addressed the Hybrid Flow Shop (HFS) scheduling problems to minimize the total work in process inventory. Naderi-Beni et al. (2012) considered no-wait flow shop problem where setup times depend on sequence of operations and solved the model using two-phase fuzzy programming. Galzina et al. (2012) proposed a novel adaptive approach with fuzzy particle swarm optimization technique to optimize flow shop scheduling problem. A literature review on exact, heuristic and meta heuristic methods that can be applied to solve the scheduling of hybrid flow shop problem have been proposed by Ruiz & Vázquez-Rodríguez (2010). Chen et al. (2009) minimized make span using genetic algorithm to move from local optimal to near-optimal solutions in Reentrant Permutation Flow Shop scheduling problem. Lei (2010) used random key genetic algorithm (RKGA) to find a schedule that maximizes the minimum agreement index subject to periodic maintenance, non-resumable jobs and fuzzy due-date. Zare & Fakhrazad (2011) used hybrid genetic algorithm to minimize the total job tardiness for flexible flow-shop. Behnamian & Ghomi (2011) solved sequence-dependent setup time hybrid flow shop

Author α σ ω: Department of Industrial and Production Engineering, Bangladesh University of Engineering and Technology (BUET), Dhaka-1000, Bangladesh. e-mails: himangshu@ipe.buet.ac.bd, ridwan_rivan@yahoo.com, azeem@ipe.buet.ac.bd

Author ρ: Director, Group Reedisha, Dhaka, Bangladesh. e-mail: touseefkarim@gmail.com

scheduling problems using genetic algorithm and a variable neighborhood search. Wang & Liu (2013) proposed genetic algorithm to optimize a two-stage no-wait hybrid flow shop scheduling problem. Moradinasab et al. (2013) used adaptive imperialist competitive algorithm (AICA) and genetic algorithm (GA) to minimize the total completion time of a two-stage flow shop scheduling problem. Six heuristic algorithms were used by Shafaei & Mirzaeyan (2011) to solve a no-wait two stage flexible flow shop with minimizing makespan. Ramanan et al. (2011) used neural network to find a sequence of jobs in the flow shop to minimize makespan. Chou (2013) used PSO algorithm and cocktail decoding method to minimize the make span of a hybrid flow shop (HFS) problem. Marichelvam et al. (2014) used cuckoo search (CS) meta heuristic algorithm to minimize the make span for the Hybrid flow shop scheduling (HFS). Gupta et al. (2002) developed and compared different local search heuristics for two stage flow shop problem considering total weighted tardiness as a secondary criterion. Khalouli et al. (2010) used ant colony optimization method to minimize the sum of the total earliness and tardiness penalties in a hybrid flow shop scheduling problem. Behnamian & Zandieh (2011) proposed colonial competitive algorithm (CCA) to minimize earliness and quadratic tardiness penalties. Cheng et al. (2001) articulated three machine permutations in a flow shop scheduling problem where the main objective was to minimize the maximum completion time. Gu et al. (2010) proposed an improved gravitational search algorithm (IGSA) to solve the flow shop scheduling problem with the objective of minimizing production time. Rabiee et al. (2012) proposed the adapted imperialist competitive algorithm (AICA) to minimize mean completion time (MCT) of a no-wait two-machine flow shop scheduling problem. Bożejko et al. (2013) proposed Parallel tabu search algorithm for the hybrid flow shop problem. Mozdgir et al. (2013) addressed a two stage assembly flow shop problem with multiple non-identical assembly machines and proposed a mixed-integer linear programming model to solve the problem. Benavides et al. (2014) proposed heuristic solution for a combined assignment and scheduling problem named Heterogeneous Flow Shop Scheduling Problem.

The above proposed methods did not consider the fuzzy multi objective parallel flow shop problem and machine reliability based utilization during scheduling while considering criteria like critical ratio, completion time, processing complexity, mean time between maintenance and set up time. In this research, fuzzy rule based system is developed to address the uncertainty and satisfy the multiple objectives. This system provided the priority of each job by considering the information of processing time, due date, cost over time, profit over time, critical ratio, inventory level, etc. as appropriate fuzzy membership functions. On the other hand, the

fuzzy inference system (FIS) provided the machine priority based on reliability and availability at each of the stages, considering mean time between failure (MTBF), mean time to repair (MTTR), mean time between shutdowns (MTBS), mean time between maintenance (MTBM), failure rate (FR) and set up time (ST).

II. PROBLEM DEFINITION

In hybrid flow shop there may be a numbers of stages of processor and each stage has more than one identical machine. The machines are identical in a sense that, for a given stage the jobs need the same time to be processed on each machine. But the reliability and availability characteristics, i.e. mean time between failures, mean time to repair, mean time between shutdowns, mean time between maintenance, failure rate and set up time are different for each machine in a single stage.

Each job has to be processed in every stage. The priority of the jobs could be appraised by the values of their processing times, profit over time, due dates, cost over time, critical ratio (defined as due date divided by processing time), level of inventory, completion times and processing complexity. In each stage, the identical machine's priority is determined based on the information of mean time between failure, mean time to repair, mean time between shutdowns, mean time between maintenance, failure rate and set up time. Figure 1 shows the typical flow shop structure in a manufacturing facility.

So this problem involves determining the mechanism of priority determination of the jobs and machines in an individual stage and how to manage grouping, sequencing and allocating the jobs in the machines at every stage in such a way that the total percentage of over utilization will be minimized and top priority jobs will be processed on top priority machines.

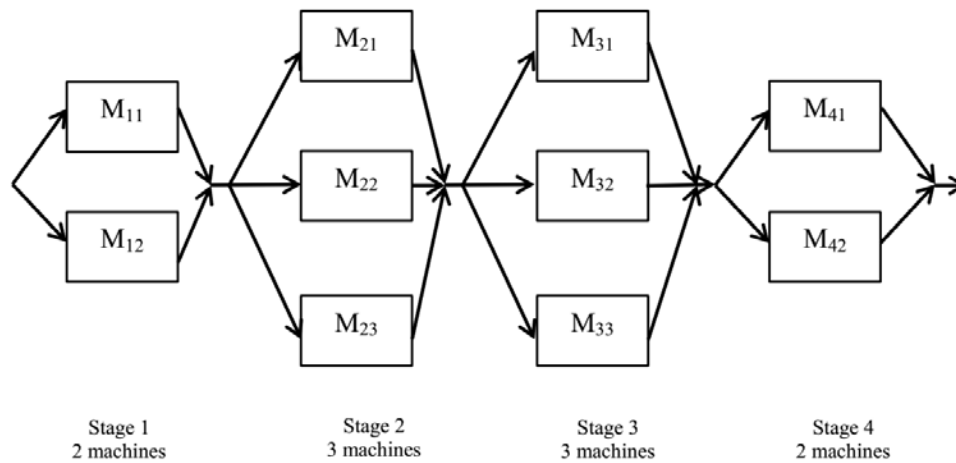


Fig.1: Typical scenario of hybrid flow shop

III. METHODOLOGY

In this study, Mamdani type fuzzy inference method is used because it is intuitive and well suited to human input nonlinear system. Here all the variables are expressed as linguistic variables. In this model, 'minimum' is used for implication stage, 'maximum' is used for aggregation stage and 'centroid' is used for defuzzification. A fuzzy inference system (FIS) is used to identify priority of each job and machine for each individual stage of the hybrid flow shop, using MATLAB Fuzzy Logic Toolbox. To process the top priority job in the top priority machines and minimize the make span, an algorithm is developed for grouping, sequencing and allocating the jobs to the machines at every stage in such a way that the total percentage of over utilization is minimized. Proposed methodology has been summarized in Figure 2.

a) FIS for Job Priority Determination

To incorporate multi objective scheduling, fuzzy priority is calculated by developing a fuzzy inference system using MATLAB fuzzy logic toolbox. Six input variables: critical ratio, profit over time, cost over time, level of inventory, processing complexity and flow times are used in this FIS. The output of this FIS is job priority. In this research, triangular membership function is chosen for all variables, because of its simplicity and computational efficiency. Also there is no speed overshoot, with high steady state accuracy and fast response and recovery. Five membership functions for each input and output are used because higher the number of functions, the greater the number of rules required.

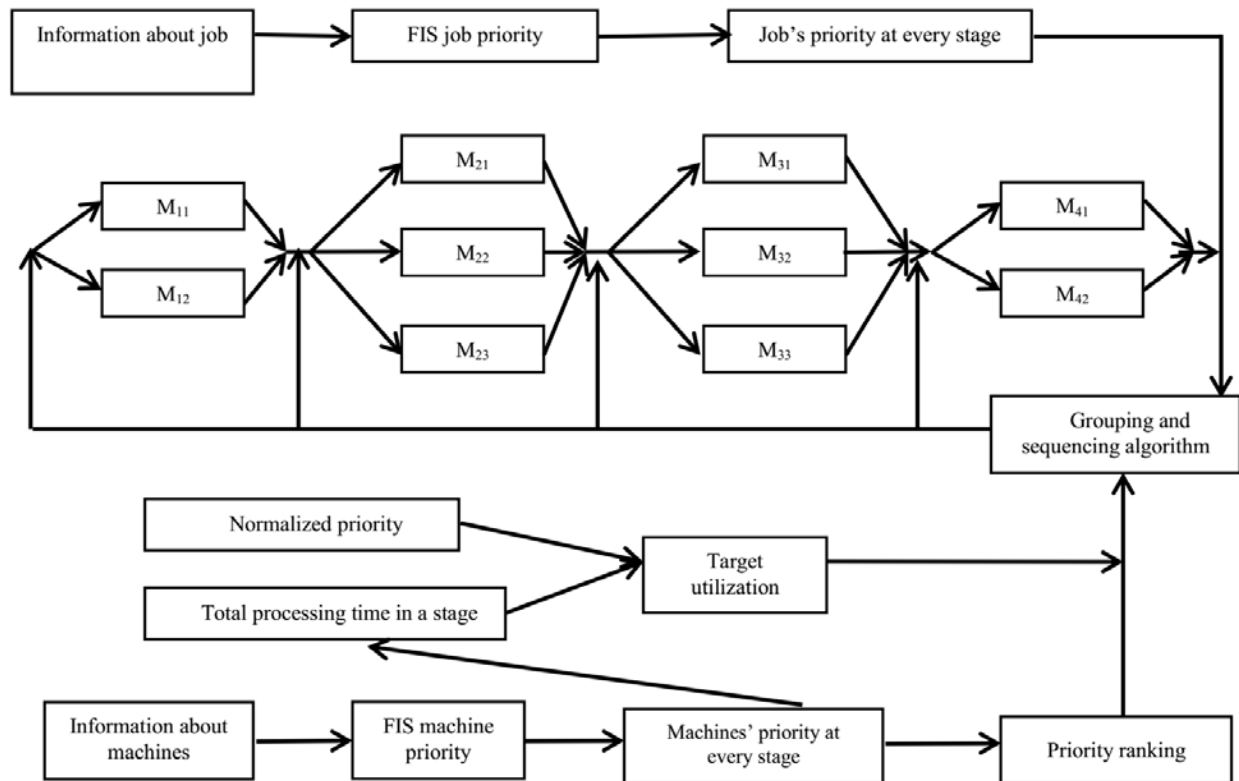


Fig. 2: Reliability and availability based multi objective scheduling framework

i. Job Priority in the First Stage

To determine the priority at the first stage, six above mentioned variables are considered. All the input variables have triangular membership function and all variables are divided into five zones: very low, low,

medium, high and very high. An output variable of first stage is job priority (value between 0 and 1). Output membership function is also triangular shaped, having five possible zones. The developed FIS model for job priority at first stage is shown in Figure 3.

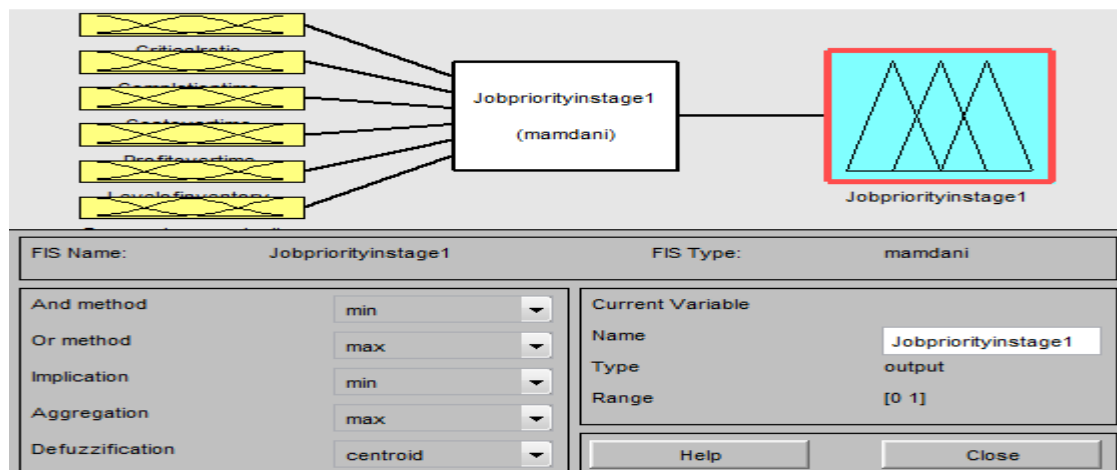


Fig. 3: FIS for job priority in stage 1

ii. If-Then Rules for the First Stage

The following 35 rules are constructed in the fuzzy inference system to determine the job priority in each machine at the first stage. The weights for each of the input variables are summarized in Table 1.

Table 1: Weights of Input Variables

Input Variables for Job	Weights	Input Variables for Machine	Weights
Critical Ratio	0.95	MTBF	1
Flow Time	0.8	MTTR	1
Cost over Time	1.0	MTBS	0.9
Profit over Time	0.9	MTBM	0.9
Level of Inventory	0.9	FR	1
Processing Complexity	0.5	ST	0.8

1. If (Critical Ratio is Very Low) then (Job Priority is Very High)
 2. If (Critical Ratio is Low) then (Job Priority is High)
 3. If (Critical Ratio is Medium) then (Job Priority is Medium)
 4. If (Critical Ratio is High) then (Job Priority is Low)
 5. If (Critical Ratio is Very High) then (Job Priority is Very Low)
 6. If (Completion Time is Very Low) then (Job Priority is Very High)
 7. If (Completion Time is Low) then (Job Priority is High)
 8. If (Completion Time is Medium) then (Job Priority is Medium)
 9. If (Completion Time is High) then (Job Priority is Low)
 10. If (Completion Time is Very High) then (Job Priority is Very Low)
 11. If (Cost over Time is Very Low) then (Job Priority is Very Low)
 12. If (Cost over Time is Low) then (Job Priority is Low)
 13. If (Cost over Time is Medium) then (Job Priority is Medium)
 14. If (Cost over Time is High) then (Job Priority is High)
 15. If (Cost over Time is Very High) then (Job Priority is Very High)
 16. If (Profit over Time is Very Low) then (Job Priority is Very Low)
 17. If (Profit over Time is Low) then (Job Priority is Low)
 18. If (Profit over Time is Medium) then (Job Priority is Medium)
 19. If (Profit over Time is High) then (Job Priority is High)
 20. If (Profit over Time is Very High) then (Job Priority is Very High)
 21. If (Level of Inventory is Very Low) then (Job Priority is Very Low)
 22. If (Level of Inventory is Low) then (Job Priority is Low)
 23. If (Level of Inventory is Medium) then (Job Priority is Medium)
 24. If (Level of Inventory is High) then (Job Priority is High)
 25. If (Level of Inventory is Very High) then (Job Priority is Very High)
 26. If (Processing Complexity is Very Low) then (Job Priority is Very High)
 27. If (Processing Complexity is Low) then (Job Priority is High)
 28. If (Processing Complexity is Medium) then (Job Priority is Medium)
 29. If (Processing Complexity is High) then (Job Priority is Low)
 30. If (Processing Complexity is Very High) then (Job Priority is Very Low)
 31. If (Critical Ratio is Very Low) and (Completion Time is Very Low) and (Cost over Time is Very High) and (Profit over Time is Very High) and (Level of Inventory is Very High) and (Processing Complexity is Very Low) then (Job Priority is Very High)
 32. If (Critical Ratio is Low) and (Completion Time is Low) and (Cost over Time is High) and (Profit over Time is High) and (Level of Inventory is High) and (Processing Complexity is Low) then (Job Priority is Very High)
 33. If (Critical Ratio is Medium) and (Completion Time is Medium) and (Cost over Time is Medium) and (Profit over Time is Medium) and (Level of Inventory is Medium) and (Processing Complexity is Medium) then (Job Priority is High)
 34. If (Critical Ratio is High) and (Completion Time is High) and (Cost over Time is Low) and (Profit over Time is Low) and (Level of Inventory is Low) and (Processing Complexity is High) then (Job Priority is Very Low)
 35. If (Critical Ratio is Very High) and (Completion Time is Very High) and (Cost over Time is Very Low) and (Profit over Time is Very Low) and (Level of Inventory is Very Low) and (Processing Complexity is Very High) then (Job Priority is Very Low)
- iii. Job Priority at Other Stages*
- To find out the subsequent stages, five variables are considered: critical ratio, profit over time, cost over time, processing complexity and flow times. After completing the first stage, raw materials will be converted into work-in-process, which would be automatically available for the next stages. The input variables have triangular membership function and all variables are divided into five zones: very low, low, medium, high and very high. An output variable of first stage is job priority (value between 0 and 1). Output membership function is also triangular shaped, having five possible zones.

b) FIS for Machine Priority Determination

In hybrid flow shop scheduling, machine priority is very important because the highly reliable and available machine should get the high priority during allocation of the top priority job. Reliability is a broad term that focuses on the ability of a product to perform its intended function. Reliability can be defined as the probability that an item will continue to perform its intended function without failure for a specified period of the time under the stated condition. To determine the priority of each machine in every stage, fuzzy inference system is developed which take MTBF, MTTR, MTBS, MTBM, FR and ST as input and machine priority as output. The weights of the input variables are shown in table-1. In this, FIS triangular membership is chosen for each input and output variables. Five membership functions for each input and five membership functions for output are used.

c) Grouping and Sequencing Algorithm

After getting the priority of each job and machine for every stage using the two different FIS, the following measures are taken:

Job priority is determined based on their priority value. The job which has the highest priority value has ranked top, second highest priority has ranked second and so on. Similarly, machine priority is determined based on the reliability and availability values. Using this priority value and processing time of each job, the target utilization is calculated with the following equation:

Let us suppose the machines have priority $R_1, R_2, R_3, \dots, R_n$

Normalized Priority (for machine j), $NR_j = (R_j) / (\sum_{j=1}^n R_j)$

Target Utilization (for machine j), $T_j = NR_j * TPT$

where, TPT = Total Processing Time

i. Grouping

Main principle of this grouping algorithm is to perform the top priority job in the top priority machine. So, the top priority jobs are assigned to the highest priority machine until it satisfies the target utilization.

When it does not satisfy the target utilization, the second highest priority machine is selected and the rest of the jobs are assigned until the target utilization of this machine is satisfied.

If it does not satisfy in the first assignment, the percentage of over utilization for that assignment ($U2\%$) is calculated. The percentage of over utilization ($U1\%$) is also deduced if it is assigned to the highest priority machine with previous assignment. The jobs are assigned to the machine in which percentage of over utilization is minimized and the rest of the jobs are assigned until it satisfies the target utilization of the second highest priority machine.

If it does not satisfy other than the first assignment, the third highest priority machine is

selected and the rest of the jobs are assigned to it until it satisfies its target utilization.

If it does not satisfy in the first assignment, the percentage of over utilization for that assignment is calculated. The percentage of over utilization is also deduced if it is assigned to the highest priority machine with previous assignment. The jobs are assigned to the machine in which percentage of over utilization is minimized and the rest of the jobs are assigned until it satisfies the target utilization of the third highest priority machine.

If it does not satisfy other than the first assignment, the fourth highest priority machine is selected and the rest of the jobs are assigned to it until it satisfies its target utilization.

Similarly grouping is performed in other stages.

ii. Sequencing

Sequencing is determined based on the priority of the job. Highest priority job in the group is assigned first, followed by the second, third and so on. Except for the first stage sequencing, other subsequent sequencing may need to be modified in order to minimize the make span, without hampering the main principle of grouping and sequencing. That is, the higher priority job does not need to wait for the job which has lower priority. It is modified in such a way that if the arrival time of the higher priority job is greater than the completion time of the less priority job in that stage for the same group, the lower priority job should be done first. The complete flow chart for grouping and sequencing algorithm is shown in Figure 4.

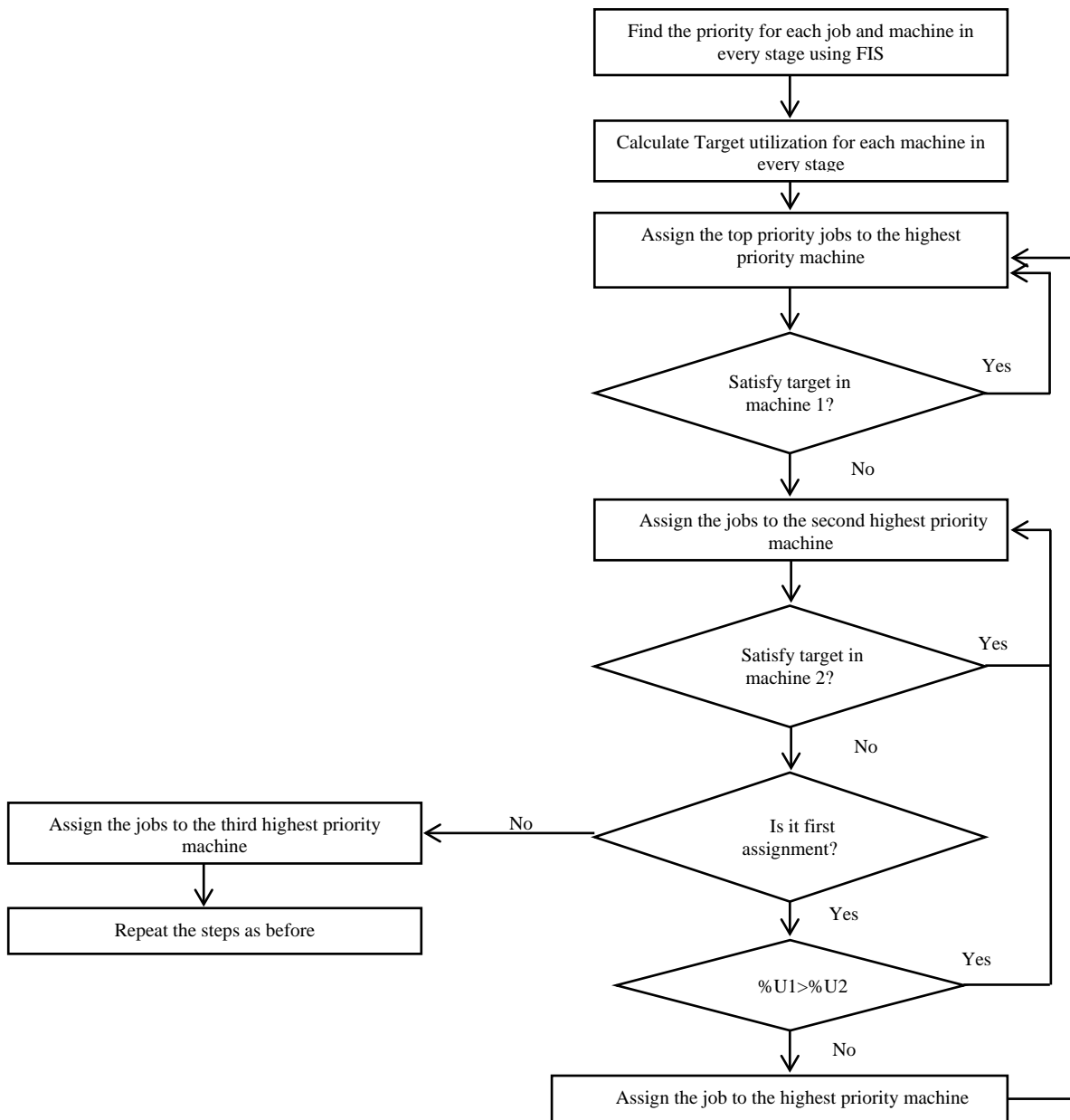


Fig. 4: Grouping and sequencing algorithm

IV. NUMERICAL ILLUSTRATION

The developed algorithm has been coded in C++ programming language with MATLAB fuzzy logic tool box to put the system into practice. For analyzing the performance of the developed algorithm, a case study has been presented. The case study depicted here uses the data collected from a local textile knit composite factory located at Gazipur, Bangladesh to clarify the proposed process. A four stage multi-processor flow shop is designed, having 2 machines in the first stage, 3 machines in the second and third, and in the final stage, 2 machines. Five jobs have been considered. Here M_{kj} indicates the machine j in stage k . So the jobs in the system pass through four different stages having ten machines. Figure 5 represents the

four stage hybrid flow shop diagram considered in this paper.

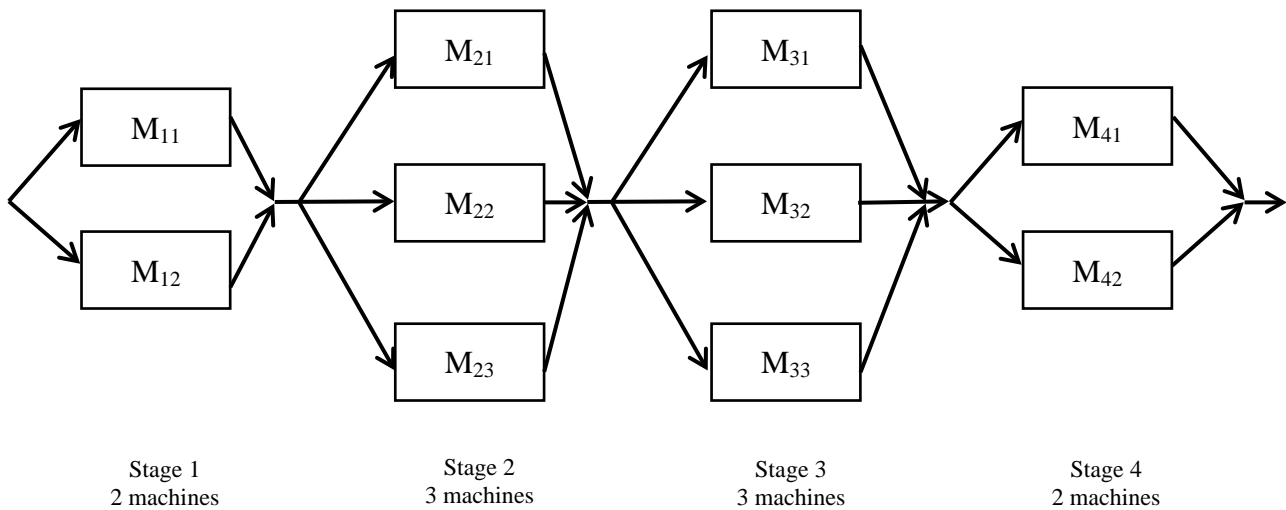


Fig. 5: Four stage hybrid flow shop

The critical ratio for all the machines in every stage is calculated using the processing times and the due date, based on customer requirements (see Table 2).

Table 2: Information about Processing Times, Due Date and Critical Ratio

Job Name	Processing time in Stage 1 (mins)	Processing time in Stage 2 (mins)	Processing time in Stage 3 (mins)	Processing time in Stage 4 (mins)	Due Date (Days)	Critical Ratio in Stage 1	Critical Ratio in Stage 2	Critical Ratio in Stage 3	Critical Ratio in Stage 4
A	96	87	137	151	4	0.042	0.046	0.029	0.026
B	79	125	102	61	1	0.013	0.008	0.0098	0.016
C	115	139	81	92	6	0.052	0.043	0.074	0.065
D	66	109	93	70	3	0.045	0.028	0.032	0.043
E	165	82	145	100	5	0.03	0.061	0.034	0.05
Total	521	542	558	474					

Table 3 shows the job completion time in each stage, as well as the profit over time and cost over time.

Table 3: Shows the job completion time in each stage, as well as the profit over time and cost over time

Job Name	Completion Time in Stage 1 (mins)	Completion Time in Stage 2 (mins)	Completion Time in Stage 3 (mins)	Completion Time in Stage 4 (mins)	Cost over Time (Tk/hr)	Profit over Time (Tk/hr)
A	124	115	162	169	85	17
B	99	143	137	86	52	20
C	142	179	105	112	73	16
D	93	131	119	88	68	24
E	181	107	156	133	61	19

Table 4 depicts the processing complexity and level of inventory for each of the jobs in four stages.

Table 4: Information about Level of Inventory and Processing Complexity

Job Name	Level of Inventory (Kg)	Processing Complexity in Stage 1	Processing Complexity in Stage 2	Processing Complexity in Stage 3	Processing Complexity in Stage 4
A	2250	0.6	0.5	0.9	0.2
B	1780	0.3	0.5	0.4	0.8
C	1960	0.7	0.8	0.9	0.4
D	2520	0.6	0.6	0.7	0.9
E	2310	0.8	0.4	0.6	0.8

Table 5 provides information about the machines' reliability and availability in each of the four stages.

Table 5: Information about Machines in Different Stages

Stage No.	Machine No.	MTBF (mins)	MTTR (mins)	MTBS (days)	MTBM (days)	FR (times per week)	ST (mins)
1	1	1300	65	25	7	0.3	70
	2	1560	80	27	6	0.6	55
2	1	850	47	4	3	1.1	25
	2	900	61	4	2	0.7	35
	3	770	52	5	3	1.3	40
3	1	1300	75	6	5	0.6	45
	2	1160	59	5	4	0.9	38
	3	1190	62	7	4	1.1	28
4	1	1460	56	9	6	0.9	25
	2	1390	73	10	8	1.4	37

The calculated priority of the job using the Fuzzy Inference System is shown in Table 6. Based on this priority, the top priority job in stage 1 is B, followed by D, A, C and E. Similarly, the priority of the jobs in other stages is calculated.

Table 6: Priority of Jobs in Each Stage

Job Name	Priority (Stage 1)	Priority (Stage 2)	Priority (Stage 3)	Priority (Stage 4)
A	0.56	0.567	0.507	0.524
B	0.628	0.526	0.526	0.539
C	0.511	0.513	0.504	0.501
D	0.577	0.529	0.541	0.549
E	0.509	0.469	0.476	0.492

Priorities of machines are also determined based on the reliability and availability of the machines found from the FIS. The machine which has the highest priority is ranked as the top priority machine. The other machines follow the same pattern. Then, based on their normalized priority, the target utilization for each machine is determined in Table 7.

Table 7: Priority and Target Utilization of Machines at Different Stages

Stage No.	Machine No.	Priority	Normalized Priority	Target Utilization
1	1	0.523	0.49857	259.755
	2	0.526	0.50143	261.245
2	1	0.479	0.35040234	189.918
	2	0.458	0.33504	181.59168
	3	0.43	0.31456	170.49
3	1	0.479	0.3352	187.0416
	2	0.46	0.321903	179.622
	3	0.49	0.342897	191.337
4	1	0.508	0.52751872	250.04361
	2	0.455	0.47248188	223.95639

V. RESULTS AND DISCUSSION

According to the developed algorithm, Table 8 provides the final grouping and sequencing of the jobs in the machines. Accordingly, the jobs should be allocated to ensure the priority of the jobs and machines.

It has been found that both machines should be used in stage 1 to perform the jobs, but in stage 2 only machine 1 is enough. Machine 3 and 1 are required in stage 3, while all the jobs should be performed in machine 1 in the last stage.

Table 8: Final Schedule

Stage No.	Machine No. (sequenced based on priority)	Job Name
1	2 (0.526)	B,C
	1 (0.523)	D,A,E
2	1 (0.479)	E,D,C,B,A
	2 (0.458)	-
	3 (0.43)	-
3	3 (0.49)	E
	1 (0.479)	D,C,B,A
	2 (0.46)	-
4	1 (0.508)	E, D,C,B,A
	2 (0.455)	-

VI. CONCLUSION

Within an organization, scheduling pertains to establishing the timing of the use of specific resources of that organization. It relates to the use of equipment, facilities and human activities. Scheduling decisions are the final step in the transformation process before actual output occurs. Effective scheduling can yield cost savings and increase in productivity. The objectives of scheduling are to achieve trade-offs among conflicting goals, which include efficient utilization of stuff, equipment and facilities, and minimization of customer waiting time, inventories and process times.

In this research, a hybrid flow shop scheduling problem has been analyzed. The uncertainty about the parameters is incorporated by the Fuzzy Inference System. In order to determine the job priority, the parameters considered are critical ratio, profit over time, cost over time, level of inventory, completion time and processing complexity. Machine reliability and availability in each of the stages are characterized by mean time between failure, mean time to repair, mean time between shut down, mean time between maintenance, failure rate and set up time. The ultimate target has been to meet the customers' requirements in terms of meeting due dates and minimizing cost over time. An algorithm is then designed to schedule the grouping and sequencing of the jobs in the respective machines in each of the stages, considering their appropriate priorities, while integrating the production and maintenance planning schemes.

For further research, sensitivity analysis can be performed to enhance the results obtained in this research, and suitable adjustments can be made accordingly. For job priority, some other factors can also be taken into consideration, such as, penalty for not meeting the deadline and level of inventory in the intermediate stages of production. Similarly, for determining the machine priority, other aspects affecting machine reliability and availability can be incorporated to make the schedule more realistic. The model can also be tested by taking actual data from other production systems. For our scheduling purpose, triangular

membership function has been used. For other types of models, Gaussian, trapezoidal or sigmoidal membership functions can be used to test the validity of results.

REFERENCES RÉFÉRENCES REFERENCIAS

- Behnamian, J., & Ghomi, S. F. (2011). Hybrid flowshop scheduling with machine and resource-dependent processing times. *Applied Mathematical Modelling*, 35(3), 1107-1123.
- Behnamian, J., & Zandieh, M. (2011). A discrete colonial competitive algorithm for hybrid flowshop scheduling to minimize earliness and quadratic tardiness penalties. *Expert Systems with Applications*, 38(12), 14490-14498.
- Benavides, A. J., Ritt, M., & Miralles, C. (2014). Flow shop scheduling with heterogeneous workers. *European Journal of Operational Research*, 237(2), 713-720.
- Bożejko, W., Pempera, J., & Smutnicki, C. (2013). Parallel tabu search algorithm for the hybrid flow shop problem. *Computers & Industrial Engineering*, 65(3), 466-474.
- Chan, F. T., Kazerooni, A., & Abhary, K. (1997). A fuzzy approach to operation selection. *Engineering Applications of Artificial Intelligence*, 10(4), 345-356.
- Chen, J. S., Pan, J. C. H., & Lin, C. M. (2009). Solving the reentrant permutation flow-shop scheduling problem with a hybrid genetic algorithm. *International Journal of Industrial Engineering: Theory, Applications and Practice*, 16(1), 23-31.
- Cheng, J., Steiner, G., & Stephenson, P. (2001). A computational study with a new algorithm for the three-machine permutation flow-shop problem with release times. *European Journal of Operational Research*, 130(3), 559-575.
- Chou, F. D. (2013). Particle swarm optimization with cocktail decoding method for hybrid flow shop scheduling problems with multiprocessor tasks. *International Journal of Production Economics*, 141(1), 137-145.
- Galzina, V., Lujć, R., & Šarić, T. (2012). ADAPTIVE FUZZY PARTICLE SWARM OPTIMIZATION FOR

- FLOW-SHOP SCHEDULING PROBLEM. *Tehnickivjesnik/Technical Gazette*, 19(1).
10. Grabot, B., & Geneste, L. (1994). Dispatching rules in scheduling Dispatching rules in scheduling: a fuzzy approach. *The International Journal of Production Research*, 32(4), 903-915.
 11. Gu, W. X., Li, X. T., Zhu, L., ZHOU, J. P., & HU, Y. M. (2010). A gravitational search algorithm for flow shop scheduling. *CAAI Transaction on Intelligent Systems*, 5(5), 411-418.
 12. Gupta, J. N., Hennig, K., & Werner, F. (2002). Local search heuristics for two-stage flow shop problems with secondary criterion. *Computers & Operations Research*, 29(2), 123-149.
 13. Hong, T. P., & Wang, T. T. (2000). Fuzzy flexible flow shops at two machine centers for continuous fuzzy domains. *Information Sciences*, 129(1), 227-237.
 14. Ishibuchi, H., Yamamoto, N., Misaki, S., & Tanaka, H. (1994). Local search algorithms for flow shop scheduling with fuzzy due-dates. *International Journal of Production Economics*, 33(1), 53-66.
 15. Kacem, I., Hammadi, S., & Borne, P. (2002). Pareto-optimality approach for flexible job-shop scheduling problems: hybridization of evolutionary algorithms and fuzzy logic. *Mathematics and computers in simulation*, 60(3), 245-276.
 16. Keung, K. W., Ip, W. H., & Yuen, D. (2003). An intelligent hierarchical workstation control model for FMS. *Journal of materials processing technology*, 139(1), 134-139.
 17. Khalouli, S., Ghedjati, F., & Hamzaoui, A. (2010). A meta-heuristic approach to solve a JIT scheduling problem in hybrid flow shop. *Engineering Applications of Artificial Intelligence*, 23(5), 765-771.
 18. Lei, D. (2010). Fuzzy job shop scheduling problem with availability constraints. *Computers & Industrial Engineering*, 58(4), 610-617.
 19. Marichelvam, M. K., Prabakaran, T., & Yang, X. S. (2014). Improved cuckoo search algorithm for hybrid flow shop scheduling problems to minimize makespan. *Applied Soft Computing*, 19, 93-101.
 20. McCahon, C. S., & Lee, E. S. (1992). Fuzzy job sequencing for a flow shop. *European Journal of Operational Research*, 62(3), 294-301.
 21. Moradinasab, N., Shafaei, R., Rabiee, M., & Ramezani, P. (2013). No-wait two stage hybrid flow shop scheduling with genetic and adaptive imperialist competitive algorithms. *Journal of Experimental & Theoretical Artificial Intelligence*, 25(2), 207-225.
 22. Mozdgir, A., Fatemi Ghomi, S. M. T., Jolai, F., & Navaei, J. (2013). Two-stage assembly flow-shop scheduling problem with non-identical assembly machines considering setup times. *International Journal of Production Research*, 51(12), 3625-3642.
 23. Naderi-Beni, M., Tavakkoli-Moghaddam, R., Naderi, B., Ghobadian, E., & Pourrousta, A. (2012). A two-phase fuzzy programming model for a complex bi-objective no-wait flow shop scheduling. *International Journal of Industrial Engineering Computations*, 3(4), 617-626.
 24. Paul, S. K., & Azeem, A. (2010). Minimization of work in process inventory in hybrid flow shop scheduling using fuzzy logic. *International Journal of Industrial Engineering: Theory, Applications and Practice*, 17(2).
 25. Petroni, A., & Rizzi, A. (2002). A fuzzy logic based methodology to rank shop floor dispatching rules. *International Journal of Production Economics*, 76(1), 99-108.
 26. Rabiee, M., Zandieh, M., & Jafarian, A. (2012). Scheduling of a no-wait two-machine flow shop with sequence-dependent setup times and probable rework using robust meta-heuristics. *International Journal of Production Research*, 50(24), 7428-7446.
 27. Ramanan, T. R., Sridharan, R., Shashikant, K. S., & Haq, A. N. (2011). An artificial neural network based heuristic for flow shop scheduling problems. *Journal of Intelligent Manufacturing*, 22(2), 279-288.
 28. Ruiz, R., & Vázquez-Rodríguez, J. A. (2010). The hybrid flow shop scheduling problem. *European Journal of Operational Research*, 205(1), 1-18.
 29. Shafaei, R., Rabiee, M., & Mirzaeyan, M. (2011). An adaptive neuro fuzzy inference system for makespan estimation in multiprocessor no-wait two stage flow shop. *International Journal of Computer Integrated Manufacturing*, 24(10), 888-899.
 30. Tsujimura, Y., Park, S. H., Chang, I. S., & Gen, M. (1993). An effective method for solving flow shop scheduling problems with fuzzy processing times. *Computers & industrial engineering*, 25(1), 239-242.
 31. Wang, S., & Liu, M. (2013). A genetic algorithm for two-stage no-wait hybrid flow shop scheduling problem. *Computers & Operations Research*, 40(4), 1064-1075.
 32. Yun, Y. S. (2002). Genetic algorithm with fuzzy logic controller for preemptive and non-preemptive job-shop scheduling problems. *Computers & industrial engineering*, 43(3), 623-644.
 33. Zadeh, L. A. (1965). Fuzzy sets. *Information and Control*, 8(3), 338-353.
 34. Zare, H. K., & Fakhrzad, M. B. (2011). Solving flexible flow-shop problem with a hybrid genetic algorithm and data mining: A fuzzy approach. *Expert systems with applications*, 38(6), 7609-7615.



This page is intentionally left blank